

AD 2 AERODROMES**VRMG AD 2.1 Aerodrome location indicator and name****VRMG -GAN ISLAND/Gan****VRMG AD 2.2 Aerodrome geographical and administrative data**

1	<i>ARP coordinates and site at AD</i>	004136S 0730920E Runway mid-point
2	<i>Direction and distance from City</i>	148° 13 KM from Hithadhoo
3	<i>Elevation / Reference temperature</i>	1.8 M (6 FT) / 30.1°C
4	<i>MAG VAR/Annual change</i>	5° W (1995)
5	<i>AD Administration Address</i> <i>Telephone</i> <i>Fax</i> <i>Telex</i> <i>AFS</i>	Maldives Airports Company Ltd Male' International Airport Republic of Maldives Tel: (960) 3323470 Telefax: (960) 3323504 Telex: 66123 MAA MF AFS: VRMMYDYX
6	<i>Types of traffic permitted (IFR/VFR)</i>	IFR / VFR
7	<i>Remarks</i>	Nil.

VRMG AD 2.3 Operational hours

1	<i>AD Administration</i>	H24
2	<i>Customs and immigration</i>	H24
3	<i>Health and sanitation</i>	H24
4	<i>AIS Briefing Office</i>	H24
5	<i>ATS Reporting Office (ARO)</i>	H24
6	<i>MET Briefing Office</i>	H24
7	<i>ATS</i>	H24
8	<i>Fuelling</i>	H24
9	<i>Handling</i>	H24
10	<i>Security</i>	H24
11	<i>De-icing</i>	Nil
12	<i>Remarks</i>	1. Prior permission required for Non-scheduld traffic. 2. On friday BTN 0715- 0815 UTC ground handling services (item N. 8 and 9) not available

VRMG AD 2.4 Handling services and facilities

1	<i>Cargo handling facilities</i>	All facilities available to handle upto B767 - 300
2	<i>Fuel/oil types</i>	Jet A1
3	<i>Fuelling facilities/capacity</i>	1 truck, capacity 40 MT/2300 KL
4	<i>De-icing facilities</i>	Nil
5	<i>Hanger space available for visiting aircraft</i>	Nil
6	<i>Repair facilities for visiting aircraft</i>	Nil
7	<i>RMK</i>	Nil

VRMG AD 2.5 Passenger facilities

1	<i>Hotels</i>	AT AD
---	---------------	-------

VRMG AD 2.5 Passenger facilities

2	<i>Restaurants</i>	AT A and in the city
3	<i>Transportation</i>	Private taxis / bus service
4	<i>Medical facilities</i>	First aid at AD . Hospital in the city
5	<i>Bank/Post</i>	AT AD. Open during flight operation huors
6	<i>Tourist Office</i>	Nil
7	<i>Remarks</i>	Nil

VRMG AD 2.6 Rescue and fire fighting services

1	<i>AD category for fire fighting</i>	CAT 7
2	<i>Rescue equipment</i>	All equipment required for CAT 7 available
3	<i>Capability for removal of disabled aircraft</i>	Nil
4	<i>Remarks</i>	Nil

VRMG AD 2.7 Seasonal availability - clearing

1	<i>Types of clearing equipment</i>	Nil
2	<i>Clearance priorities</i>	Nil
3	<i>Remarks</i>	Aerodrome service right throughout the year

VRMG AD 2.8 Aprons, taxiways and check locations data

1	<i>Apron surface and strength</i>	Surface: Concrete Strength: PCN 35
2	<i>Taxiway width, surface and strength</i>	Width: 19.5 M Surface: Concrete Strength: PCN 35
	<i>ACL location and elevation</i>	Location: Runway mid-point Elevation: 1.8 M / 6 FT
4	<i>VOR/INS Checkpoint</i>	VOR: Nil INS: Nil
5	<i>Remarks</i>	Nil

VRMG AD 2.9 Surface movement guidance and control system and markings

1	<i>Use of aircraft stand ID signs, TWY guide lines and visual docking/parking guidance system of aircraft stands</i>	TWY Sig boards, LGT at all intersections with TWY and RWY
2	<i>RWY/TWY markings and LGT</i>	RWY: Designation, THR, TDZ, fixed distance, centreline and pre- THR markings. THR and end lights. TWY : centreline and holding position markings. Edge lights on TWY A and B
3	<i>Stop bars</i>	Nil
4	<i>Remarks</i>	Nil

VRMG AD 2.10 Aerodrome obstacles

<i>In approach/TKOF areas</i>			<i>In circling area and at AD</i>		<i>Remarks</i>
1			2		3
<i>RWY/Area affected</i>	<i>Obstacle type elevation markings / LGT</i>	<i>Coordinates</i>	<i>Obstacle type elevation markings / LGT</i>	<i>Coordinates</i>	
<i>a</i>	<i>b</i>	<i>c</i>	<i>a</i>	<i>b</i>	
			Hithadhu Dhiraagu Antenna	00 36 51 S 073 05 49 E	Nil
			Hithadhu Dhiraagu Site 2 (Near Hithadhu School)	00 35 35 S 073 04 49 E	Nil
			Hithadhu Dhiraagu Site 3 (Near Police Academy)	00 36 16 S 073 05 24 E	Nil
			Maradhu dhiraagu Antenna	00 40 10 S 073 07 21 E	
			Feydhu dhiraagu Antenna	00 40 55 S 073 08 05 E	
			Dhiraagu Antenna at Gan Site 2	00 41 18 S 073 09 01 E	
			Dhiraagu Antenna at Hulhumeedhu	00 35 23 S 073 13 18 E	
			dhiraagu Antenna At Herethere	00 36 40 S 073 13 29 E	
			Dhiraagu Antenna at Villingili	00 40 24 S 073 11 34 E	
			Wataniya Antenna at Hithadhu Site 1	00 36 45.22 S 073 05 24.54 E	
			Wataniya Antenna at Hithadhu Site 2	00 35 47.26 S 073 05 24.54 E	
			Wataniya Antenna at Hulhudhu	00 35 26.04 S 073 13 35.82 E	
			Wataniya Antenna at GAN	00 41 23.03 S 073 09 09.5 E	
			Runway 10 Windsock	00 41 27.0 S 073 08 45.2 E	
			Runway 28 Windsock	00 41 44.4 S 073 09 55.4 E	
			Apron floodlight Mast NR 1	00 41 25.2 S 073 09 18.3 E	
			Apron Floodlight Mast NR 2	00 41 25.5 S 073 09 20.4 E	
			Apron Floodlight Mast NR 3	00 41 26.2 S 073 09 25.0 E	

VRMG AD 2.10 Aerodrome obstacles

<i>In approach/TKOF areas</i>			<i>In circling area and at AD</i>		<i>Remarks</i>
1			2		3
<i>RWY/Area affected</i>	<i>Obstacle type elevation markings / LGT</i>	<i>Coordinates</i>	<i>Obstacle type elevation markings / LGT</i>	<i>Coordinates</i>	
<i>a</i>	<i>b</i>	<i>c</i>	<i>a</i>	<i>b</i>	
			Apron Floodlight Mast NR 4	00 41 26.7 S 073 09 27.9 E	
			Apron Floodlight Mast NR 5	00 41 27.2 S 073 09 31.0 E	
			Apron Floodlight Mast NR 6	00 41 27.6 S 073 09 34.0 E	
			NDB Antenna (W)	00 41 51.2 S 073 09 49.5 E	
			NDB Antenna (E)	00 41 51.8 S 073 09 51.5 E	
			VOR / DME	00 41 39.37 S 073 09 19.77 E	

VRMG AD 2.11 Meteorological information provided

1	<i>Associated MET Office</i>	Gan MET Office
2	<i>Hours of service MET Office outside hours</i>	H24 -
3	<i>Office responsible for TAF preparation Periods of validity</i>	National Meteorological Centre 24 HR
4	<i>Type of landing forecast Interval of issuance</i>	TREND on request
5	<i>Briefing/consulataion provided</i>	At Gan Met. office
6	<i>Flight documentation Language(s) used</i>	Charts, abbreviated plain language text English
7	<i>Charts and other INFO AVBL</i>	S, U ₈₅ , U ₅₀ , U ₂₅ , SWH, SWM, T
8	<i>Supplementary EQPT AVBL for INFO for briefing or consultation</i>	Telefax: + (960) 6898007
9	<i>ATS Units Provided with information</i>	Gan TWR Male' AACC
10	<i>Additional information</i>	2 hr prior notice required

VRMG AD 2.12 Runway physical characteristics

<i>Designation RWY NR</i>	<i>True & MAG BRG</i>	<i>Dimensions of RWY (M)</i>	<i>Strength (PCN) and surface of RWY and SWY</i>	<i>THR coordinates</i>	<i>THR elevation and highest elevation of TDZ of precision APP RWY</i>
1	2	3	4	5	6
10	099° GEO 104° MAG	2651X45	PCN 35 Concrete	004129.62 S 0730840.90E	THR 1.7M / 5.5FT
28	279° GEO 284° MAG			004141.77S 0730959.90E	THR 1.9M / 6FT

VRMG AD 2.12 Runway physical characteristics

Designation RWY NR	True & MAG BRG	Dimensions of RWY (M)	Strength (PCN) and surface of RWY and SWY	THR coordinates	THR elevation and highest elevation of TDZ of precision APP RWY
1	2	3	4	5	6
Slope of RWY-SWY	SWY dimensions (M)	CWY dimensions (M)	Strip dimensions (M)	OFZ	Remarks
7	8	9	10	11	12
0%	Nil	500 X 150	2651 X 300	Nil	Nil
0%	Nil	1325 X 150	2651 X 300	Nil	Nil

VRMG AD 2.13 Declared distances

RWY	TORA (M)	TODA (M)	ASDA (M)	LDA (M)	Remarks
1	2	3	4	5	6
10	2651	2651	3151	2558	Nil
28	2651	2651	3976	2558	Nil

VRMG AD 2.14 Approach and runway lighting

RWY Designator	APP LGT type LEN INTST	THR LGT colour WBAR	VASIS (MEHT) PAPI	TDZ. LGT LEN	RWY Centre Line LGT Length, spacing colour, INTST	RWY edge LGT LEN. spacing colour INTST	RWY End LGT colour WBAR	SWY LGT LEN (M) colour	Remarks
1	2	3	4	5	6	7	8	9	10
10	SALS 420 M 1 to 5	Green Yes	PAPI on left side3° 53FT	Nil	Nil	2651 M 58.9 M Red, white& Yellow 1 to 5	Red -	Nil	Nil
28	SALS 420 M 1 to 5	Green Yes	PAPI on left side3° 53FT	Nil	Nil	2651 M 58.9 M Red, white& Yellow 1 to 5	Red -	Nil	Nil

VRMG AD 2.15 Other lighting, secondary power supply

1	ABN/IBN location, characteristics and hours of operation	ABN on top of Control Tower, ALTN WIG EV 5 SEC/ IBN : Nil,HN
2	LDI location and LGT Anemomrter location and LGT	LDI: Nil Anemometer: On top of control tower Nil
3	TWY edge and centre line lighting	Edge TWY, A, B Centre Line: Nil
4	Secondary power supply / switch-over time	All airfield lighting /12 SEC
5	Remarks	Nil

VRMG AD 2.16 Helicopter landing area

1	Coordinates TLOF or THR of FATO	Nil
---	---------------------------------	-----

VRMG AD 2.16 Helicopter landing area

2	TLOF and/or FATO elevation M/FT	Nil
3	TLOF and FATO area dimensions, surface, strength, marking	Nil
4	True and MAG BRG of FATO	Nil
5	Declared distance available	Nil
6	APP and FATO lighting	Nil
7	Remarks	All helicopters land/take-off on/from RWY

VRMG AD 2.17 ATS airspace

1	Designation and lateral limits	GAN CTR A circle, radius 20 NM centred at GAN VOR 004139S 0730920E
2	Vertical limits	SFC to 8500 FT
3	Airspace classification	D
4	ATS unit Language(s)	GAN Tower English
5	Transition altitude	11 000 FT MSL
6	Remarks	Nil

VRMG AD 2.18 ATS communication facilities

Service Designation	Call sign	Frequency	Hours of operation	Remarks
1	2	3	4	5
TWR	GAN Control	119.1 MHz 121.5 MHz 121.6 MHz	HO HO HO	Primary frequency Emergency frequency Frequency SMC frequency

VRMG AD 2.19 Radio navigation and landing aids

Type of aid, CAT of ILS/MLS (For VOR/ILS/MLS, give VAR)	ID	Frequency	Hours of operation	Site of transmitting antenna coordinates	Elevation of DME transmitting antenna	Remarks
1	2	4	5	6	7	8
VOR /DME (5° W, 1995)	GN	113.4 KHz CH 81X	H24	004139S 0730920E	10 M	Nil
NDB (5° W, 1995)	GN	317	H24	004151.59S 0730950E	Nil	Nil

VRMG AD 2.20 Local traffic regulations

Nil

VRMG AD 2.21 Noise abatement procedures

Nil

VRMG AD 2.22 Flight Procedures

Nil

VRMG AD 2.23 Additional Information

Concentration of birds at Gan Airport, on and around runway 10/28 are expected. All pilots are advised to exercise caution.

VRMG AD 2.24 Charts related to an aerodrome

Chart Name	Page
Aerodrome Chart	VRMG AD 2 - 7
Instrument Approach Chart - ICAO, NDB RWY 10	VRMG AD 2 - 9
Instrument Approach Chart - GPS, RWY 10	VRMG AD 2 - 11
Instrument Approach Chart - ICAO, NDB RWY 28	VRMG AD 2 - 13
Instrument Approach Chart - GPS, RWY 28	VRMG AD 2 - 15
Instrument Approach Chart - GPS, VOR / DME RWY 10	VRMG AD 2 - 17
Instrument Approach Chart - GPS, VOR / DME RWY 28	VRMG AD 2 - 19
Instrument Approach Chart - VOR RWY 10	VRMG AD 2 - 21
Instrument Approach Chart - VOR RWY 28	VRMG AD 2 - 23
Instrument Approach Chart - VOR / DME RWY 10	VRMG AD 2 - 25
Instrument Approach Chart - VOR / DME RWY 28	VRMG AD 2 - 27

AERODROME CHART

00° 41' 35.70" S
073° 09' 20.33" E

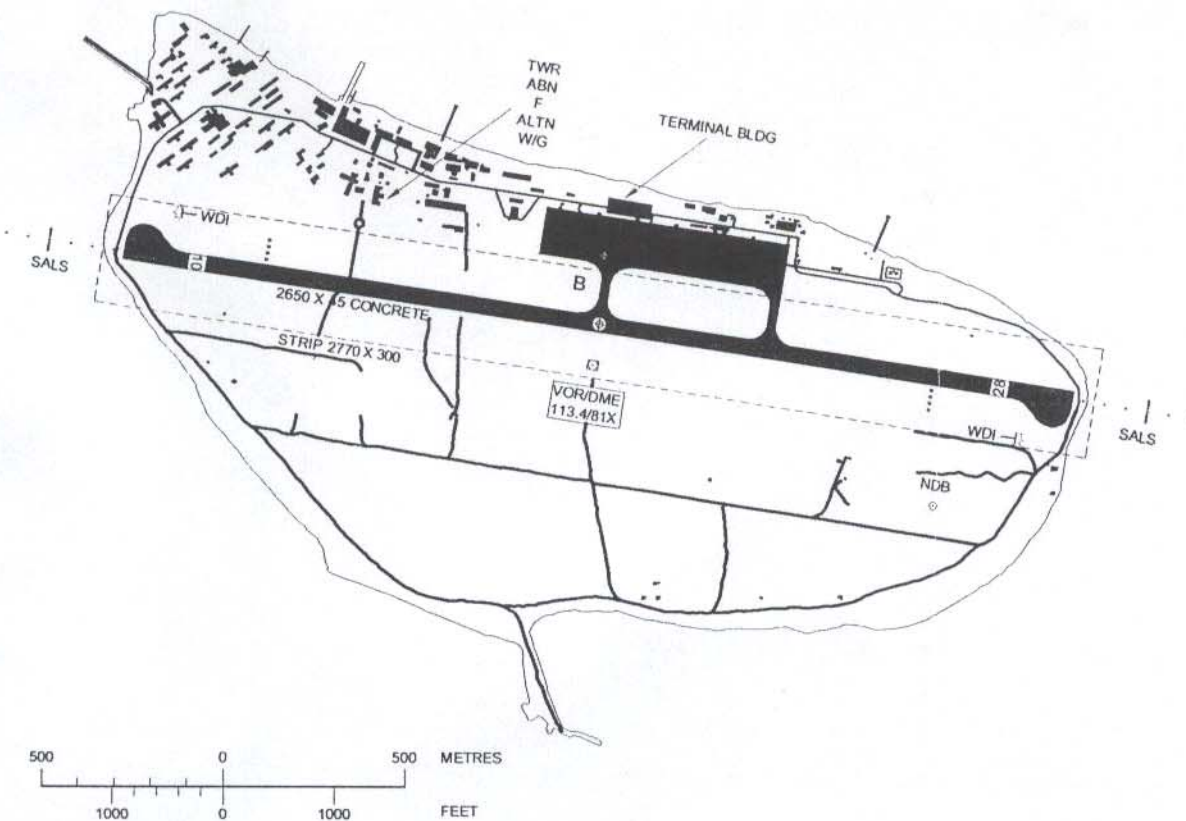
TWR 119.1

GAN ISLAND / GAN

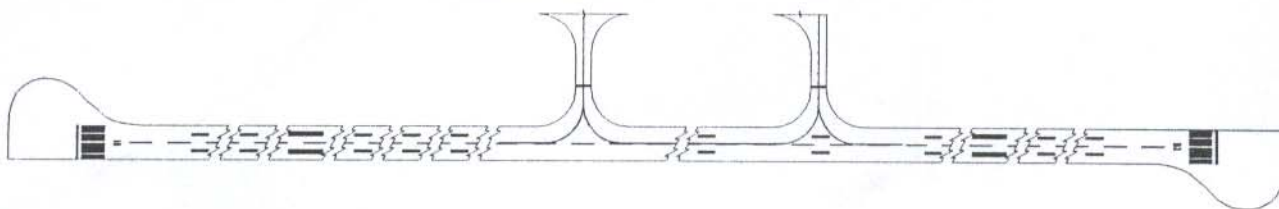
ELEVATIONS AND DIMENSIONS IN METRES
BEARINGS ARE MAGNETIC



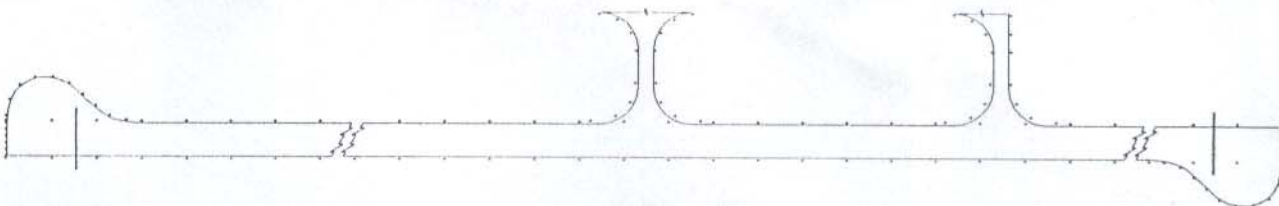
RWY	DIRECTION	THRESHOLD	BEARING STRENGTH
10	099°	00°41'29.62" S 073°08'40.88" E	PCN 35/R/B/W/T RWY 10/28 ALL TAXIWAYS AND APRON
28	279°	00°41'41.76" S 073°09'59.8" E	



MARKING AIDS RUNWAY 10/28 AND ALL TAXIWAYS



LIGHTING AIDS RUNWAY 10/28 AND ALL TAXIWAYS

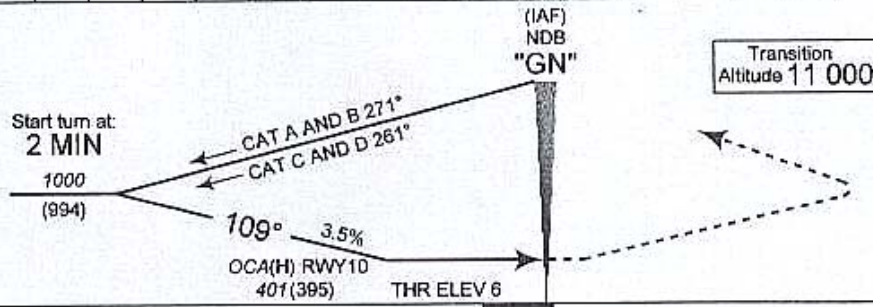
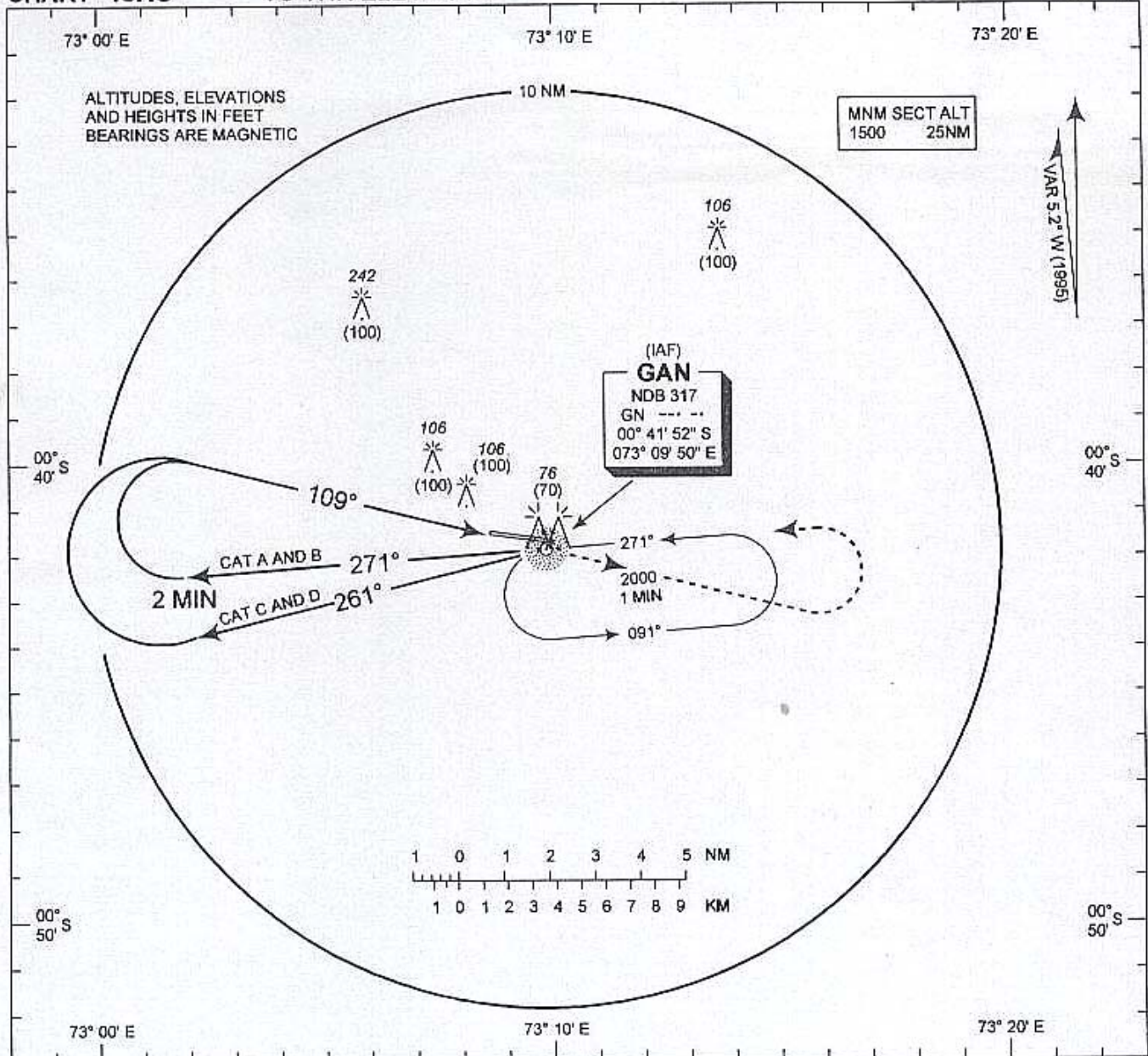


**INSTRUMENT
APPROACH
CHART - ICAO**

**ELEV 6 FT
HEIGHTS RELATED
TO THR ELEV - 6 FT**

TWR 119.1

**GAN ISLAND / GAN
NDB
RWY 10**



MISSED APPROACH: Climb straight ahead to 2000 (1994), on passing 1500 (1494) turn left to "GN" NDB.

CHANGES: Aircraft Category

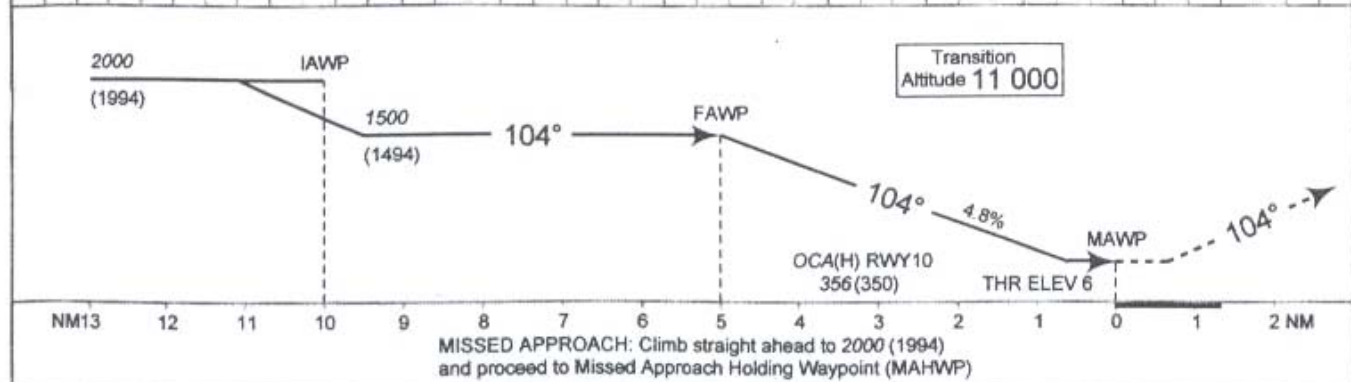
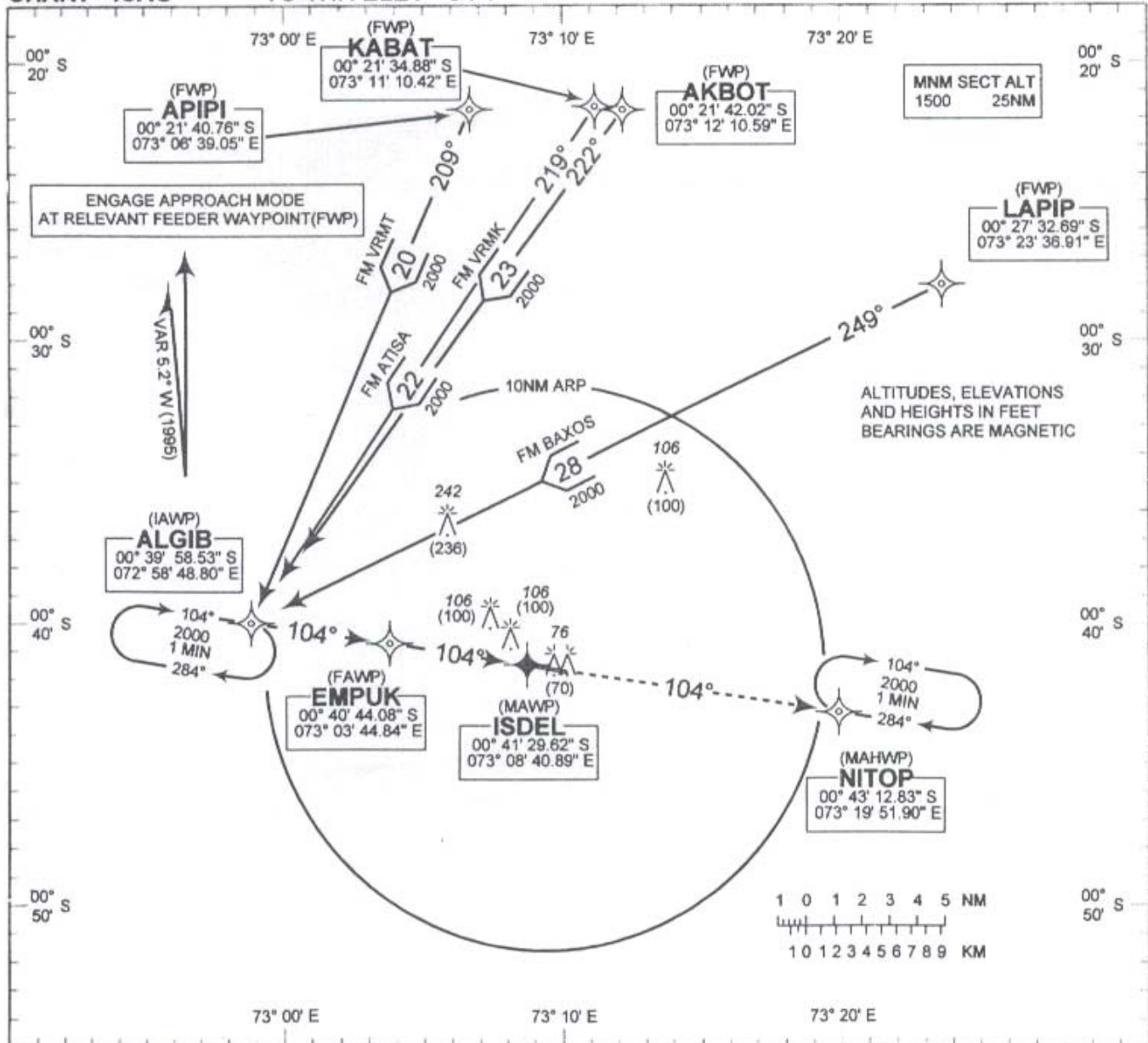
Aircraft Category	A	B	C	D	
Straight -in	401(395)				
Circling	401(395)	498(492)	597(591)	695(689)	
Speed	knots	90	120	150	180
Rate of descent	ft / min	320	430	530	640

**INSTRUMENT
APPROACH
CHART - ICAO**

**ELEV 6 FT
HEIGHTS RELATED
TO THR ELEV - 6 FT**

TWR 119.1

**GAN ISLAND / GAN
GPS
RWY 10**



MISSED APPROACH: Climb straight ahead to 2000 (1994) and proceed to Missed Approach Holding Waypoint (MAHWP)

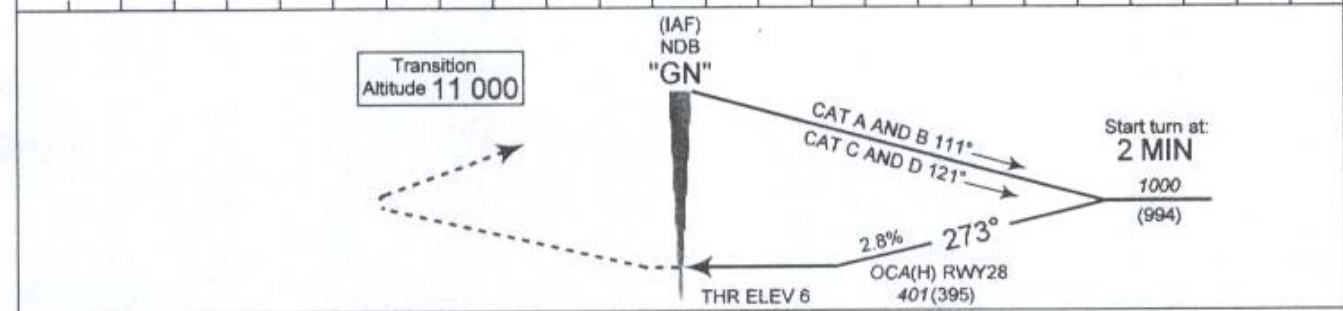
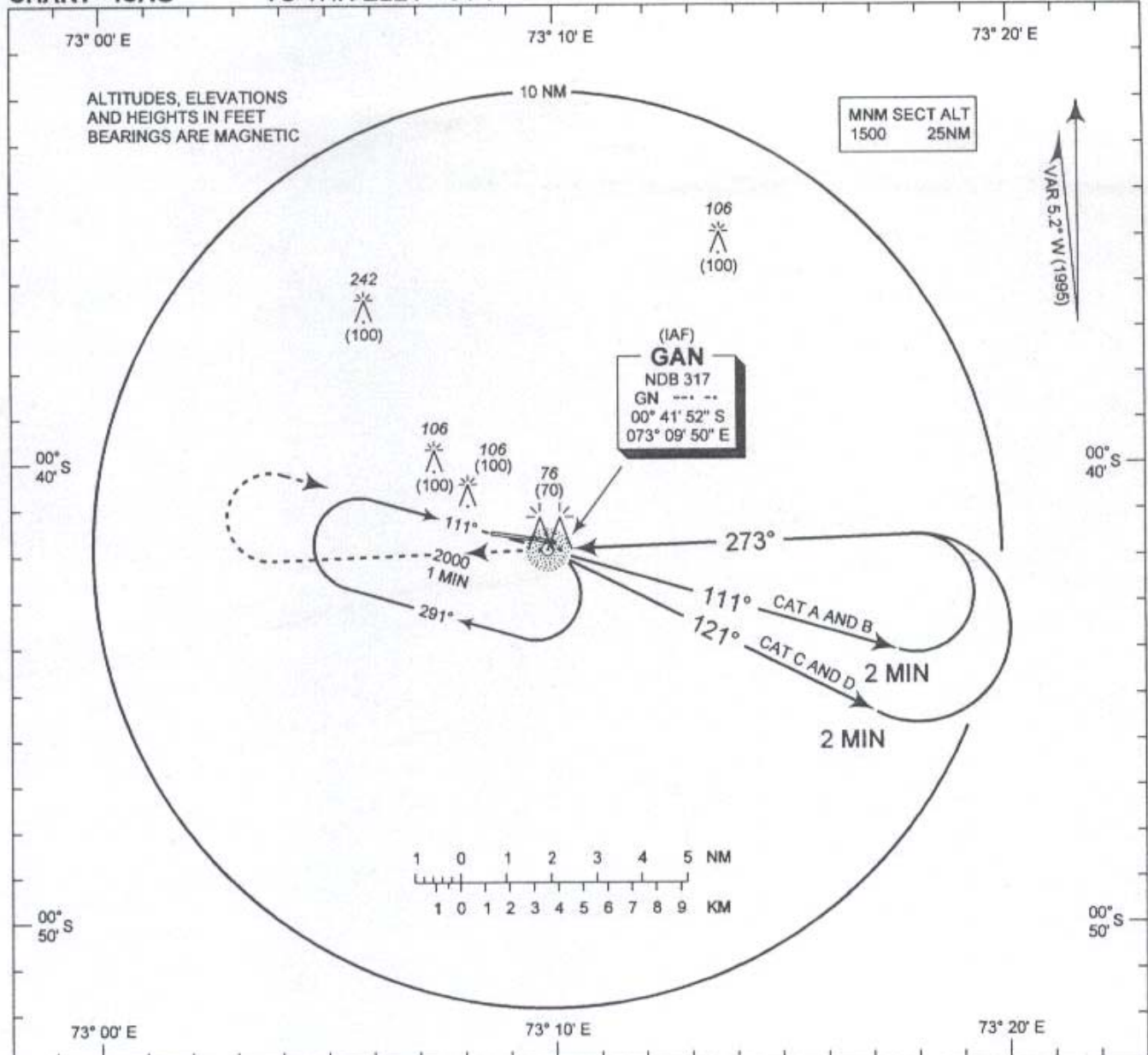
Aircraft Category	Aircraft Category				
	A	B	C	D	
Straight - In	352(346)				
Circling	400(394)	498(492)	597(591)	695(689)	
Track Miles	4	3	2	1	
Advisory Altitude (Height)	1220(1214)	930(924)	640(634)	350(344)	
Speed	knots	90	120	150	180
Rate of descent	ft / min	430	580	720	870

**INSTRUMENT
APPROACH
CHART - ICAO**

**ELEV 6 FT
HEIGHTS RELATED
TO THR ELEV - 6 FT**

TWR 119.1

**GAN ISLAND / GAN
NDB
RWY 28**



MISSED APPROACH: Climb straight ahead to 2000 (1994), on passing 1500 (1494) turn right to "GN" NDB.

Aircraft Category	A		B		C		D	
	Speed	Rate of descent	Speed	Rate of descent	Speed	Rate of descent	Speed	Rate of descent
Straight - In	401(395)							
Circling	401(395)		498(492)		597(591)		695(689)	
Speed	knots	90	120	150	180			
Rate of descent	ft / min	260	340	430	510			

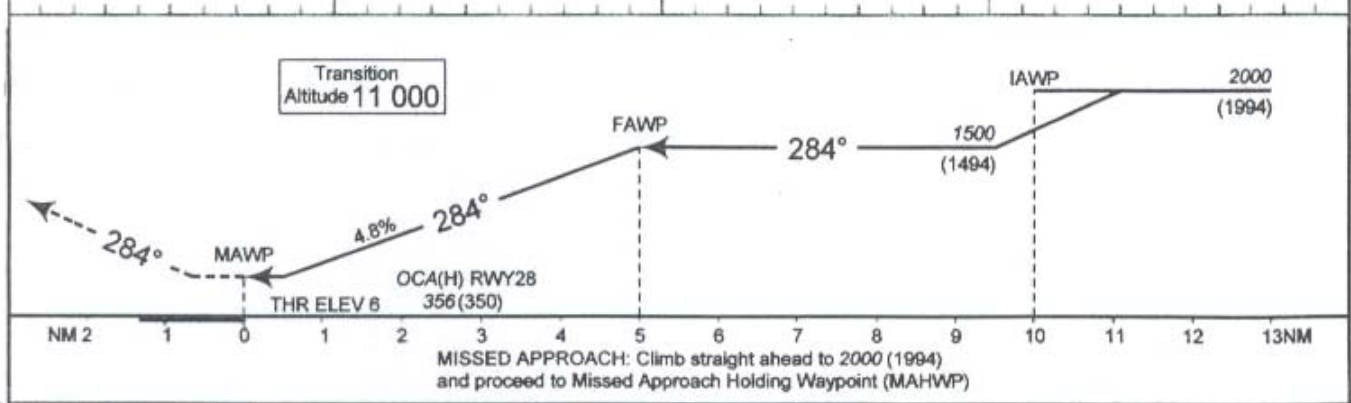
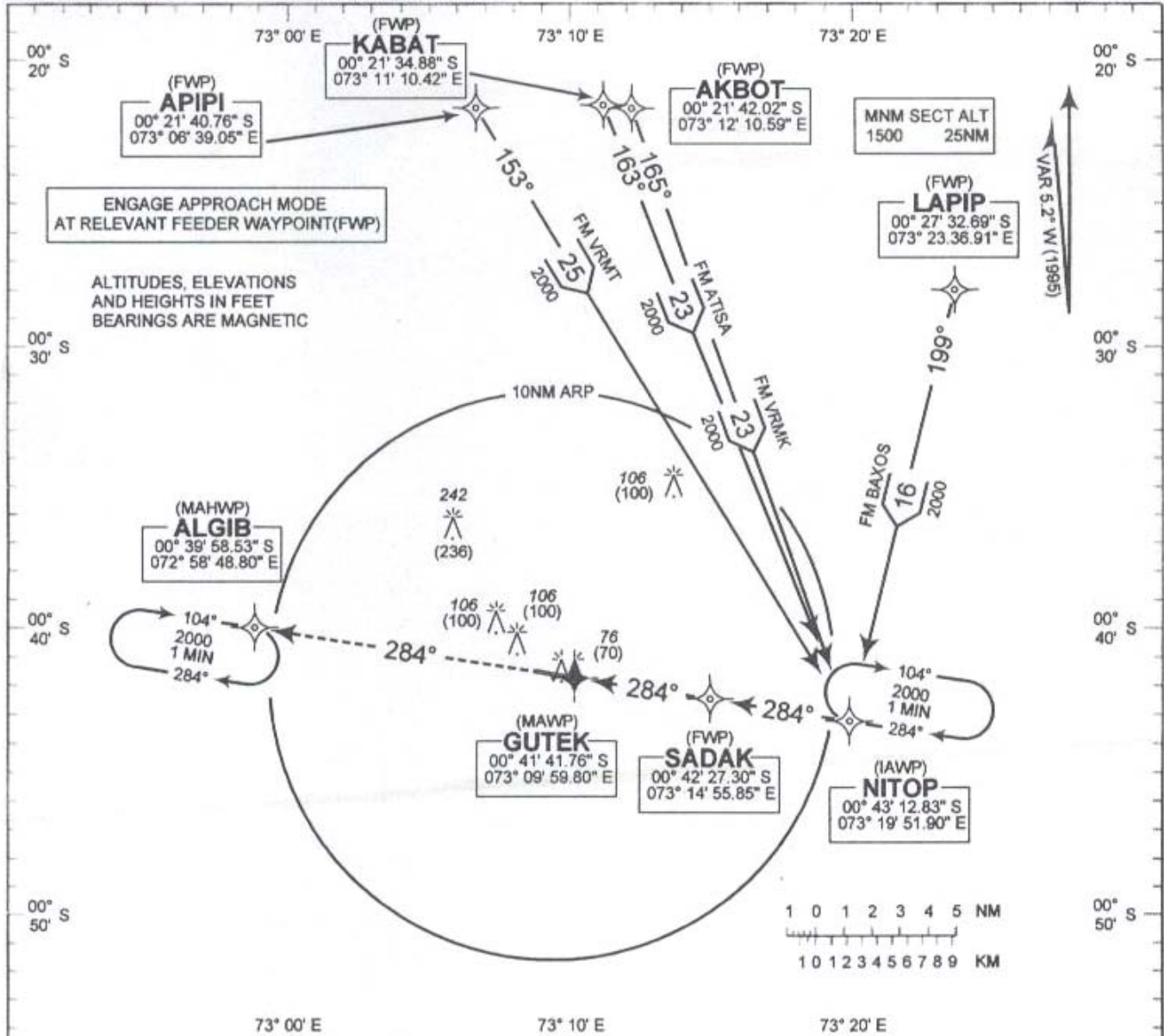
CHANGES: Aircraft Category

**INSTRUMENT
APPROACH
CHART - ICAO**

**ELEV 6 FT
HEIGHTS RELATED
TO THR ELEV - 6 FT**

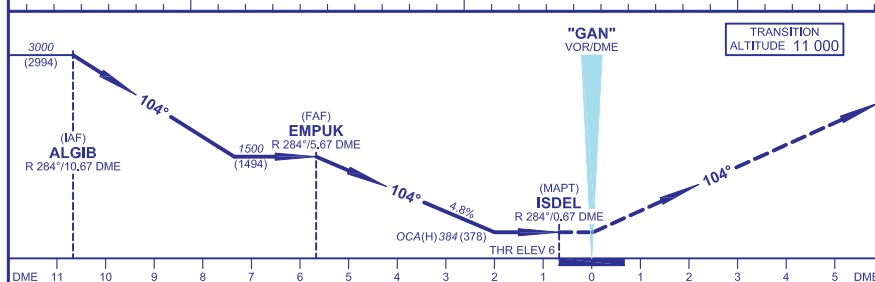
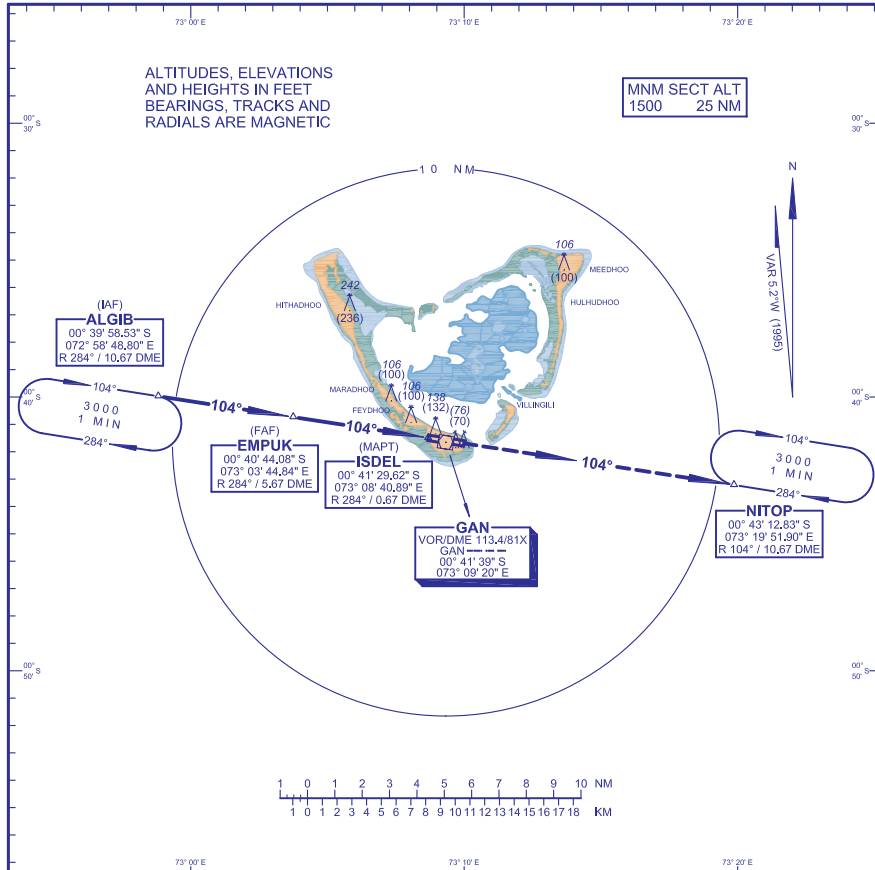
TWR 119.1

**GAN ISLAND / GAN
GPS
RWY 28**



Aircraft Category	A		B		C		D	
	knots	ft/min	knots	ft/min	knots	ft/min	knots	ft/min
Straight - in	322(316)							
Circling	400(394)		498(492)		597(591)		695(689)	
Track Miles	4		3		2		1	
Advisory Altitude (Height)	1220(1214)		930(924)		640(634)		350(344)	
Speed	90		120		150		180	
Rate of descent	430		580		720		870	

INSTRUMENT APPROACH CHART - ICAO **ELEV 6 FT** **HEIGHTS RELATED TO THR ELEV - 6 FT** **TWR 119.1** **GAN ISLAND / GAN GPS, VOR/DME** **RWY 10**



MISSED APPROACH: Climb straight ahead to 3000 (2994) and proceed to NITOP

Aircraft Category	A	B	C	D
Straight - in	384 (378)			
Circling	400 (394)	498 (492)	597 (591)	695 (689)
Distance (DME)	4	3	2	1
Altitude (Height)	1220 (1214)	930 (924)	640 (634)	350 (344)
Speed	knots 90	120	150	180
Rate of descent	ft / min 430	580	720	870

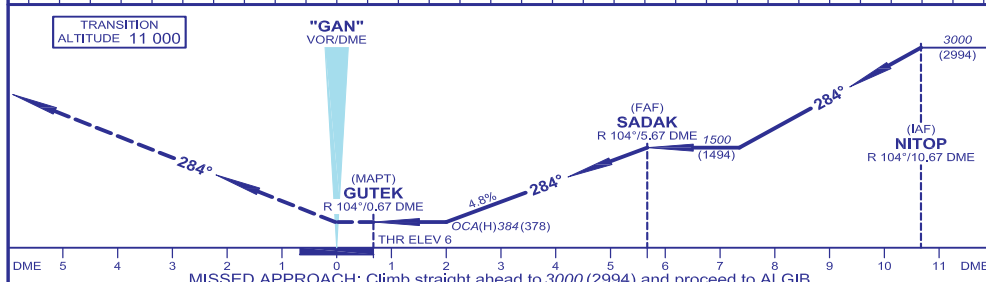
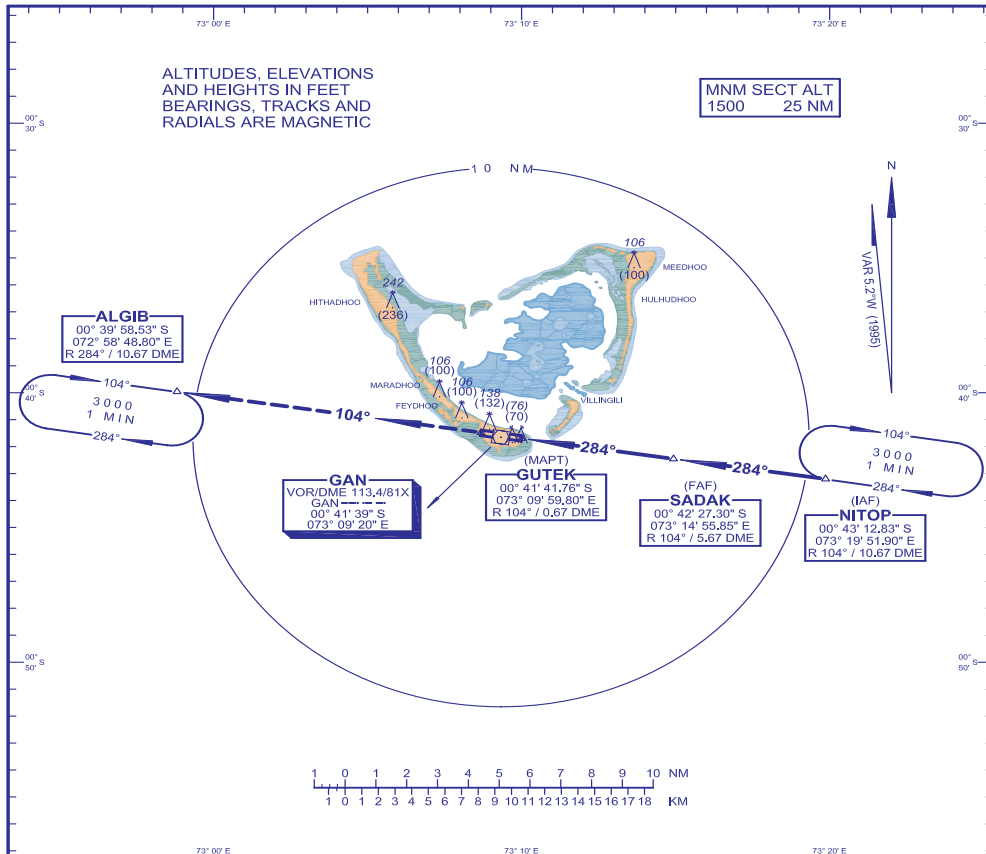
Changes: New Procedure

**INSTRUMENT
APPROACH
CHART - ICAO**

**ELEV 6 FT
HEIGHTS RELATED
TO THR ELEV - 6 FT**

TWR 119.1

**GAN ISLAND / GAN
GPS, VOR/DME
RWY 28**



Aircraft Category	A	B	C	D
Straight - in				
Circling	400 (394)	498 (492)	597 (591)	695 (689)
Distance (DME)	4	3	2	1
Altitude (Height)	1220 (1214)	930 (924)	640 (634)	350 (344)
Speed	knots 90	120	150	180
Rate of descent	ft / min 430	580	720	870

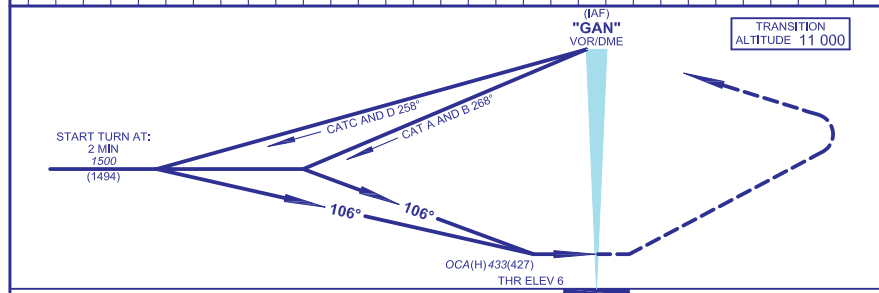
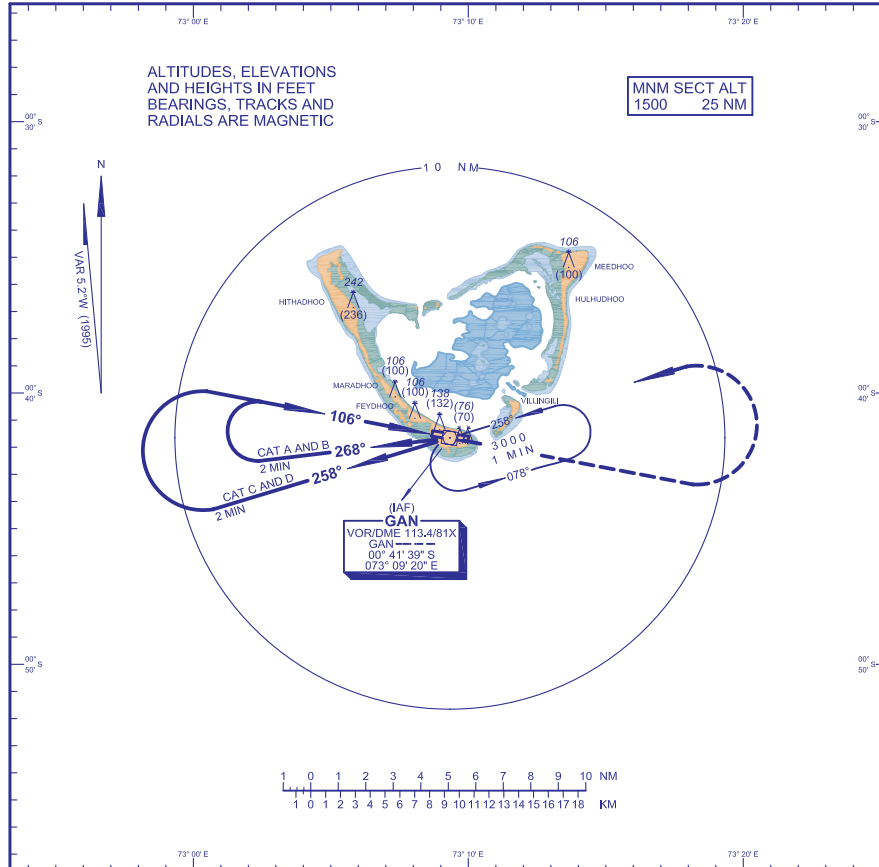
Changes: New Procedure

INSTRUMENT
APPROACH
CHART - ICAO

ELEV 6 FT
HEIGHTS RELATED
TO THR ELEV - 6 FT

TWR 119.1

GAN ISLAND / GAN
VOR
RWY 10



Changes: New Procedure

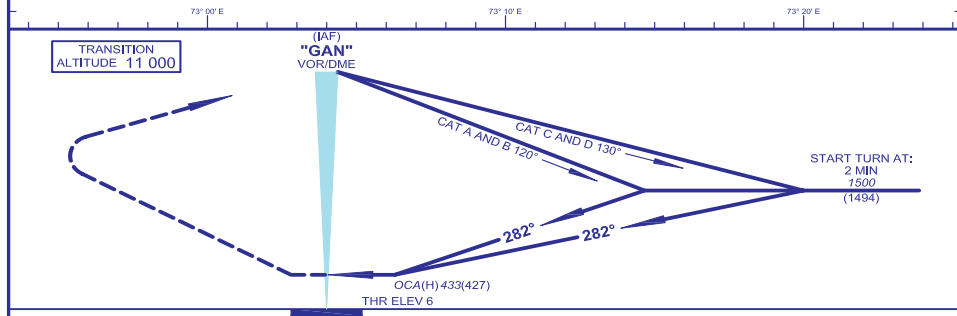
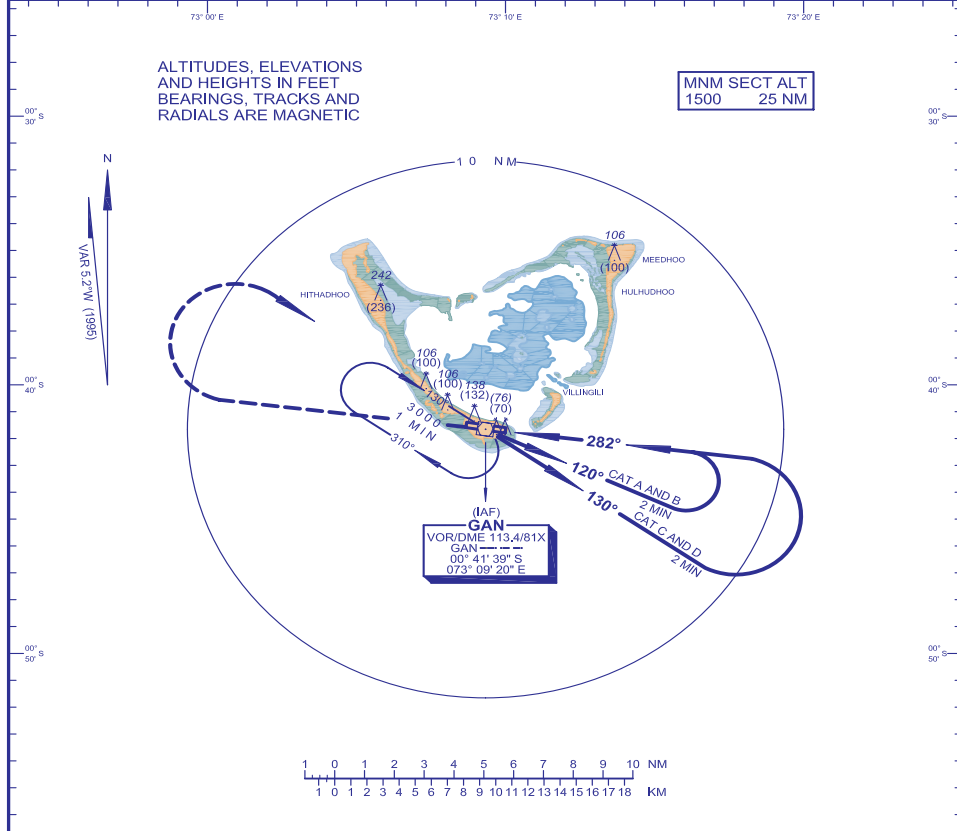
Aircraft Category	A	B	C	D
Straight - In			433 (427)	
Circleing	433 (427)	498 (492)	597 (591)	695 (689)
Speed	knots 90	120	150	180
Rate of descent	ft / min 320	430	530	640

**INSTRUMENT
APPROACH
CHART - ICAO**

**ELEV 6 FT
HEIGHTS RELATED
TO THR ELEV - 6 FT**

TWR 119.1

**GAN ISLAND / GAN
VOR
RWY 28**



MISSED APPROACH: Climb straight ahead to 3000 (2994), on passing 2000 (1994) turn right to "GAN" VOR

Aircraft Category	A	B	C	D
Straight - in			433 (427)	
Circling	433 (427)	498 (492)	597 (591)	695 (689)
Speed	knots 90	120	150	180
Rate of descent	ft / min 320	430	530	640

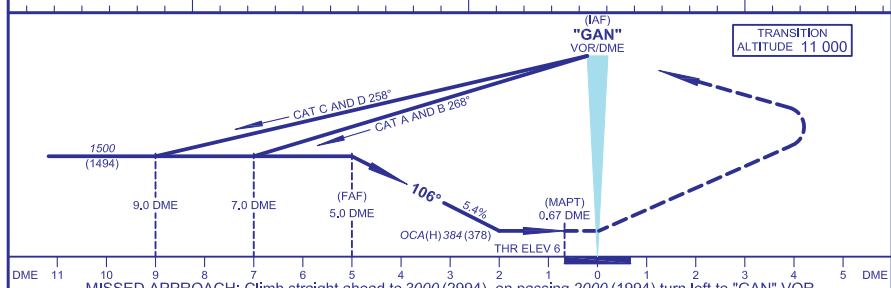
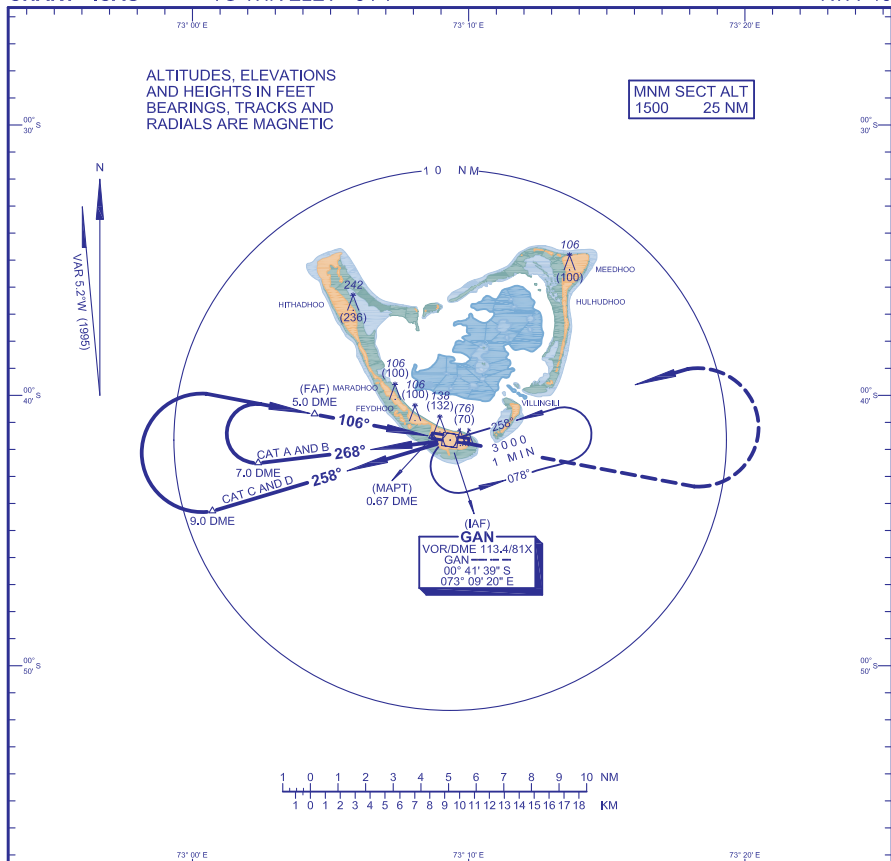
Changes: View Procedure

INSTRUMENT
APPROACH
CHART - ICAO

ELEV 6 FT
HEIGHTS RELATED
TO THR ELEV - 6 FT

TWR 119.1

GAN ISLAND / GAN
VOR/DME
RWY 10



MISSED APPROACH: Climb straight ahead to 3000 (2994), on passing 2000 (1994) turn left to "GAN" VOR

Aircraft Category	A	B	C	D
Straight - in			384 (378)	
Circling	400 (394)	498 (492)	597 (591)	695 (689)
Distance (DME)	4	3	2	1
Altitude (Height)	1170 (1164)	840 (836)	510 (504)	170 (164)
Speed	knots	90	120	150
Rate of descent	ft / min	500	660	830

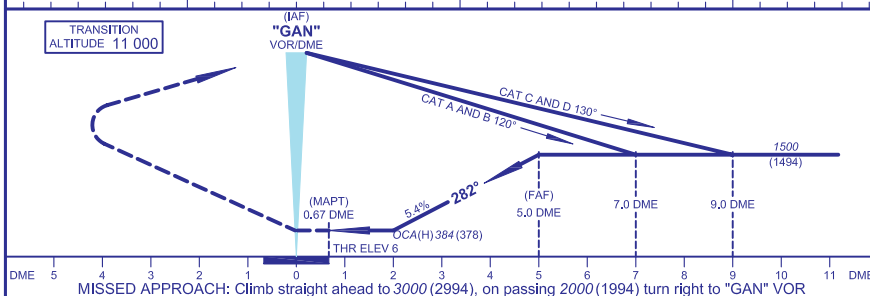
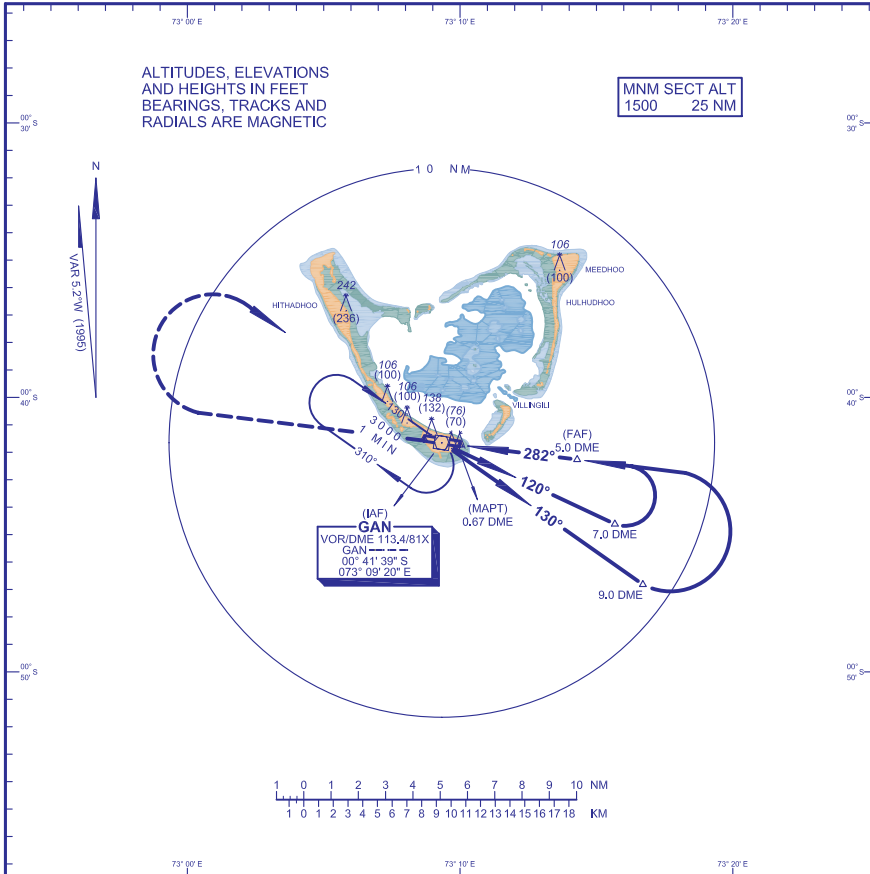
Changes: New Procedure

INSTRUMENT
APPROACH
CHART - ICAO

ELEV 6 FT
HEIGHTS RELATED
TO THR ELEV - 6 FT

TWR 119.1

GAN ISLAND / GAN
VOR/DME
RWY 28



Aircraft Category	A	B	C	D
Straight - In	384 (378)			
Circling	400 (394)	498 (492)	597 (591)	695 (689)
Distance (DME)	4	3	2	1
Altitude (Height)	1170 (1164)	840 (836)	510 (504)	170 (164)
Speed	knots 90	120	150	180
Rate of descent	ft / min 500	660	830	990