

**AD 2 AERODROMES****VRMH AD 2.1 Aerodrome location indicator and name****VRMH- HANIMAADHOO ISLAND/ Hanimaadhoo****VRMH AD 2.2 Aerodrome geographical and administrative data**

1	<i>ARP coordinates and site at AD</i>	064446.98N 0731006.60E SW corner of apron
2	<i>Direction and distance from City</i>	218° 11 KM from Kulhudhuffushi
3	<i>Elevation / Reference temperature</i>	1.4 M (4 FT) / 30.2°C
4	<i>MAG VAR/Annual change</i>	3.2° W (1995)
5	<i>AD Administration</i> <i>Address</i>  <i>Telephone</i> <i>Fax</i> <i>Telex</i> <i>AFS</i>	Maldives Airports Company Ltd Male' International Airport Republic of Maldives Tel: (960) 6520023 Telefax: (960) 3323504 AFS: VRMMYDYX
6	<i>Types of traffic permitted (IFR/VFR)</i>	IFR / VFR
7	<i>Remarks</i>	Nil.

**VRMH AD 2.3 Operational hours**

1	<i>AD Administration</i>	0230 - 0930
2	<i>Customs and immigration</i>	Nil
3	<i>Health and sanitation</i>	Nil
4	<i>AIS Briefing Office</i>	Nil
5	<i>ATS Reporting Office (ARO)</i>	Nil
6	<i>MET Briefing Office</i>	Nil
7	<i>ATS</i>	HO
8	<i>Fuelling</i>	Nil
9	<i>Handling</i>	Nil
10	<i>Security</i>	HO
11	<i>De-icing</i>	Not Applicable
12	<i>Remarks</i>	Aerodrome not available for night operations

**VRMH AD 2.4 Handling services and facilities**

1	<i>Cargo handling facilities</i>	Nil
2	<i>Fuel/oil types</i>	Jet A-1
3	<i>Fuelling facilities/capacity</i>	Fixed hose system/13000Lts
4	<i>De-icing facilities</i>	Not Applicable
5	<i>Hanger space available for visiting aircraft</i>	Nil
6	<i>Repair facilities for visiting aircraft</i>	Nil
7	<i>Remarks</i>	Nil

### VRMH AD 2.5 Passenger facilities

1	<i>Hotels</i>	Nil
2	<i>Restaurants</i>	At AD
3	<i>Transportation</i>	Launches and Dhonis can be hired from airport
4	<i>Medical facilities</i>	First Aid at AD - Nil, Hospital at City
5	<i>Bank/Post</i>	Post Office available, Bank at City
6	<i>Tourist Office</i>	Nil
7	<i>Remarks</i>	Nil

### VRMH AD 2.6 Rescue and fire fighting services

1	<i>AD category for fire fighting</i>	CAT 4
2	<i>Rescue equipment</i>	All equipment required for CAT 3 are available
3	<i>Capability for removal of disabled aircraft</i>	Nil
4	<i>Remarks</i>	Fire fighting service available; H24

### VRMH AD 2.7 Seasonal availability - clearing

1	<i>Types of clearing equipment</i>	Nil
2	<i>Clearance priorities</i>	Nil
3	<i>Remarks</i>	AD serviceable right throughout the year

### VRMH AD 2.8 Aprons, taxiways and check locations data

1	<i>Apron surface and strength</i>	Surface: Bituminous Strength: PCN 15
2	<i>Taxiway width, surface and strength</i>	Width: 14.33 M Surface: Bituminous Strength: PCN 15
	<i>ACL location and elevation</i>	Location: Runway mid-point Elevation: 1.2 M / 4 FT
4	<i>VOR/INS Checkpoint</i>	VOR: Nil INS: Nil
5	<i>Remarks</i>	Nil

### VRMH AD 2.9 Surface movement guidance and control system and markings

1	<i>Use of aircraft stand ID signs, TWY guide lines and visual docking/parking guidance system of aircraft stands</i>	Nil
2	<i>RWY/TWY markings and LGT</i>	RWY: Designation, Centreline and THR markings TWY: Nil
3	<i>Stop bars</i>	Nil
4	<i>Remarks</i>	Nil

### VRMH AD 2.10 Aerodrome obstacles

<i>in approach/TKOF areas</i>			<i>In circling area and at AD</i>		<i>Remarks</i>
1			2		3
<i>RWY/Area affected</i>	<i>Obstacle type elevation markings / LGT</i>	<i>Coordinates</i>	<i>Obstacle type elevation markings / LGT</i>	<i>Coordinates</i>	Nil
<i>a</i>	<i>b</i>	<i>c</i>	<i>a</i>	<i>b</i>	
			NAV Light for mariners	06 43 34.8 N 073 09 13.8 E	

**VRMH AD 2.10 Aerodrome obstacles**

<i>in approach/TKOF areas</i>			<i>In circling area and at AD</i>		<i>Remarks</i>
1			2		3
<i>RWY/Area affected</i>	<i>Obstacle type elevation markings / LGT</i>	<i>Coordinates</i>	<i>Obstacle type elevation markings / LGT</i>	<i>Coordinates</i>	
<i>a</i>	<i>b</i>	<i>c</i>	<i>a</i>	<i>b</i>	
			Wind Sock	06 44 45.5 N 073 10 05.8 E	
			Apron Floodlight Mast NR 1	06 44 47.6 N 073 10 06.7 E	
			Apron Floodlight Mast NR 2	06 44 48 .1 N 073 10 06.9 E	
			Apron Floodlight Mast NR 3	06 44 48.9 N 073 10 07.4 E	
			Control TWR	06 44 52.87 N 073 10 09.29 E	
			SUN TV Observatory TWR	06 46 34.9 N 073 10 59.1 E	
			MET Observatory TWR	06 46 34.9 N 073 10 59.1 E	
			Dhiraagu Antenna	06 45 46.2 N 073 10 30.9 E	
			Wataniya Antenna	06 45 43.9 N 073 10 22.0 E	
			NDB Antenna	06 44 38.08 N 073 09 59.47 E	

**VRMH AD 2.11 Meteorological information provided**

1	<i>Associated MET Office</i>	Hanimaadhoo MET Office
2	<i>Hours of service MET Office outside hours</i>	H12 Flight operational hours
3	<i>Office responsible for TAF preparation Periods of validity</i>	National Meteorological Centre H 12
4	<i>Type of landing forecast Interval of issuance</i>	TREND on request
5	<i>Briefing/consulataion provided</i>	At NMC - Male' International Airport
6	<i>Flight documentation Language(s) used</i>	Charts, abbreviated plain language text English
7	<i>Charts and other INFO AVBL</i>	Nil
8	<i>Supplementary EQPT AVBL for INFO for briefing or consultation</i>	Nil
9	<i>ATS Units Provided with information</i>	Hanimaadhoo TWR Male' TWR
10	<i>Additional information</i>	2 - 4 hr prior notice required

### VRMH AD 2.12 Runway physical characteristics

Designation RWY NR	True & MAG BRG	Dimensions of RWY (M)	Strength (PCN) and surface of RWY and SWY	THR coordinates	THR elevation and highest elevation of TDZ of precision APP RWY
1	2	3	4	5	6
03	027° GEO 030° MAG	1220 x 30	PCN 15 Bituminous	064426.84 N 0730959.95E	THR 1.4M / 4 FT
21	207° GEO 210° MAG			064502.19N 071018.08E	THR 1.4 M/ 4FT

Slope of RWY-SWY	SWY dimensions (M)	CWY dimensions (M)	Strip dimensions (M)	OFZ	Remarks
7	8	9	10	11	12
0%	Nil	610 x 150	1340 x 150	Nil	Nil
0%	Nil	610 x 150	1340 x 150	Nil	Nil

### VRMH AD 2.13 Declared distances

RWY	TORA (M)	TODA (M)	ASDA (M)	LDA (M)	RMK
1	2	3	4	5	6
03	1220	1830	1220	1220	Nil
21	1220	1830	1220	1220	Nil

### VRMH AD 2.14 Approach and runway lighting

RWY Designator	APP LGT type LEN INTST	THR LGTcolour WBAR	VASIS (MEHT) PAPI	TDZ LGT LEN	RWY Centre Line LGT Length spacing colour INTST	RWY edge LGT LEN spacing colour INTST	RWY End LGT colour WBAR	SWY LGT LEN (M) colour	Remarks
1	2	3	4	5	6	7	8	9	10
03	Nil	Green Yes	APAPI left/3° 40FT	-	-	1220M 58M White,5	Red -	Nil	Nil
21	Nil	Green Yes	APAPI left/3° 40FT	-	-	1220M 58M White,5	Red -	Nil	Nil

### VRMH AD 2.15 Other lighting, secondary power supply

1	ABN/IBN location, characteristics and hours of operation	ABN: At Control Tower ALTN W/G EV 5 SEC/IBN: Nil HN
2	LDI location and LGT Anemometer location and LGT	LDI: Nil Anemometer: On top of Control Tower: Nil
3	TWY edge and centre line lighting	Nil
4	Secondary power supply/ swith-overtime	Secondary power supply to RWY lighting /7 seconds
5	Remarks	Nil

### VRMH AD 2.16 Helicopter landing area

1	Coordinates TLOF or THR of FATO	Nil
2	TLOF and/or FATO elevation M/FT	Nil
3	TLOF and FATO area dimensions, surface, strength, marking	Nil
4	True and MAG BRG of FATO	Nil
5	Declared distance available	Nil
6	APP and FATO lighting	Nil
7	Remarks	All helicopters take-off/land from/on RWY

### VRMH AD 2.17 ATS airspace

1	Designation and lateral limits	HANIMAADHOO CTR A circle, radius 20 NM centred at 064438.08N 0730959.47E (NDB)
2	Vertical limits	SFC to 8 500 FT
3	Airspace classification	D
4	ATS unit Language(s)	Hanimaadhoo Tower English
5	Transition altitude	11 000 FT MSL
6	Remarks	Nil

### VRMH AD 2.18 ATS communication facilities

Service Designation	Call sign	Frequency	Hours of operation	Remarks
1	2	4	5	7
TWR	Hanimaadhoo Tower	119.1 MHZ	As AD	Nil

### VRMH AD 2.19 Radio navigation and landing aids

Type of aid, CAT of ILS/MLS (For VOR/ILS/MLS, give VAR)	ID	Frequency	Hours of operation	Site of transmitting antenna coordinates	Elevation of DME transmitting antenna	Remarks
1	2	4	5	6	7	8
NDB (5° W, 1995)	HA	267 KHz	H24	064438.08N 0730959.47E	Nil	Nil

### VRMH AD 2.20 Local traffic regulations

Nil

### VRMH AD 2.21 Noise abatement procedures

Nil

### VRMH AD 2.22 Flight Procedures

Nil

### VRMH AD 2.23 Additional Information

Nil

### VRMH AD 2.24 Charts related to an aerodrome

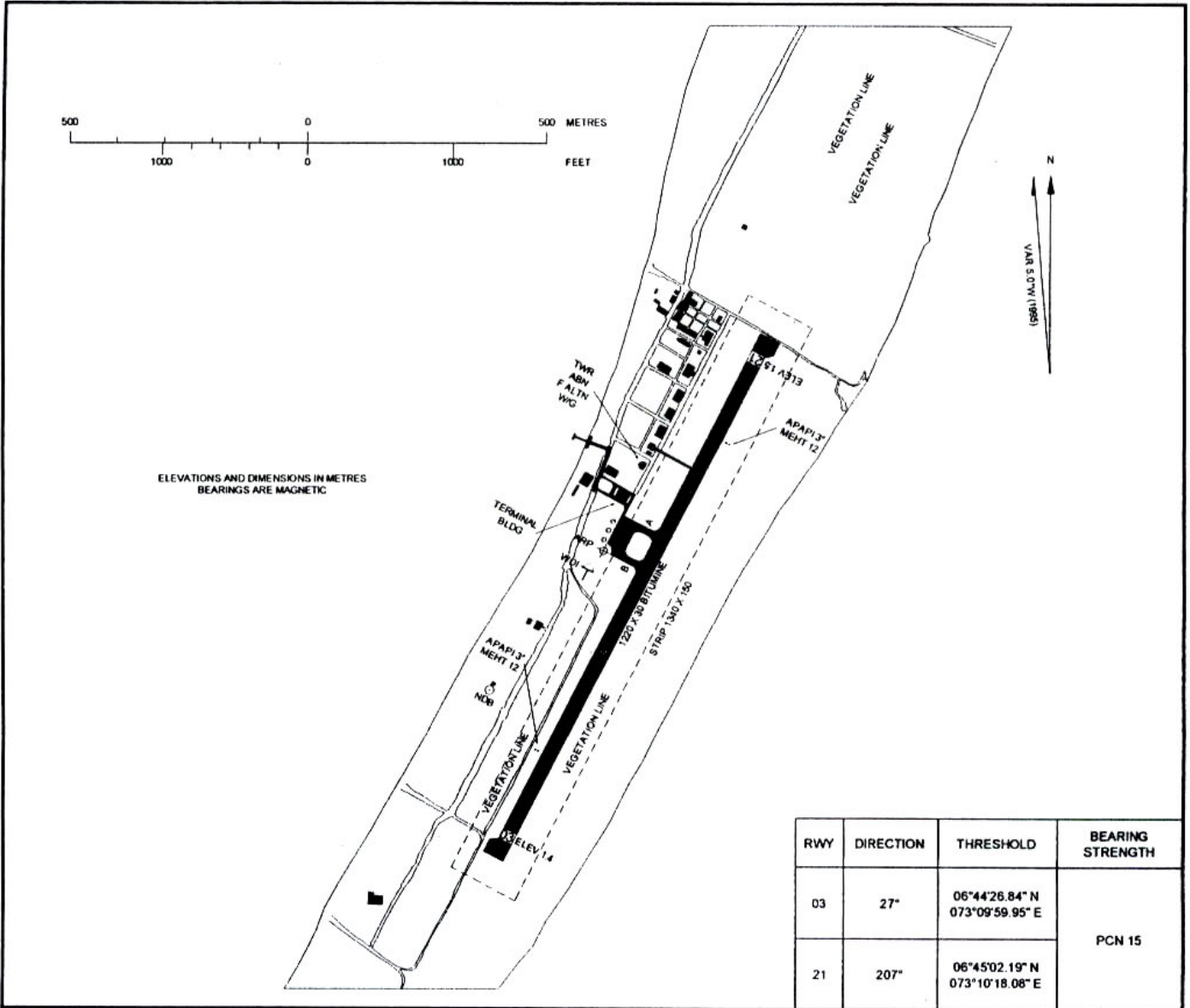
Chart Name	Page
Aerodrome chart	VRMH AD 2 - 7
Instrument Approach Chart - GPS, RWY 03	VRMH AD 2 - 9
Instrument Approach Chart - GPS, RWY 21	VRMH AD 2 - 11
Instrument Approach Chart - ICAO, NDB 03	VRMH AD 2 - 13
Instrument Approach Chart - ICAO, NDB 21	VRMH AD 2 - 15

AERODROME CHART

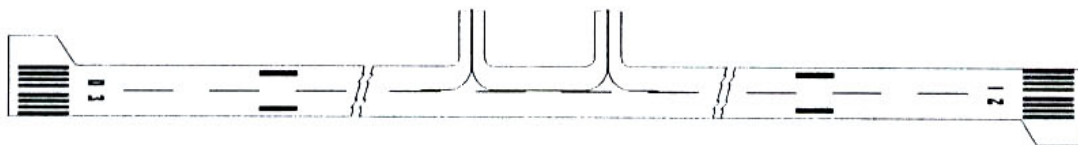
06°44'46.98" N  
073°31'06.60" E

TWR 119.1

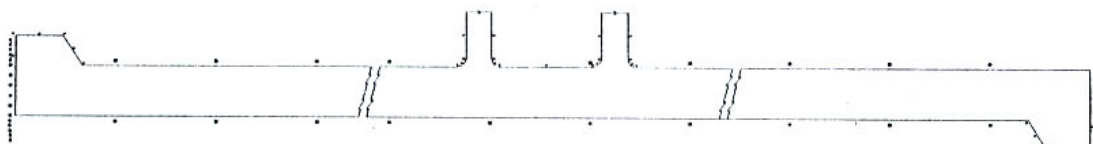
HANIMAADHOO ISLAND / HANIMAADHOO



MARKING AIDS RUNWAY 03/21 AND ALL TAXIWAYS



LIGHTING AIDS RUNWAY 03/21 AND ALL TAXIWAYS



NOTE - RETRO - REFLECTIVE MARKERS USED IN LIEU OF  
LIGHTS ON ALL TAXIWAY AND TURNING LOOP EDGES

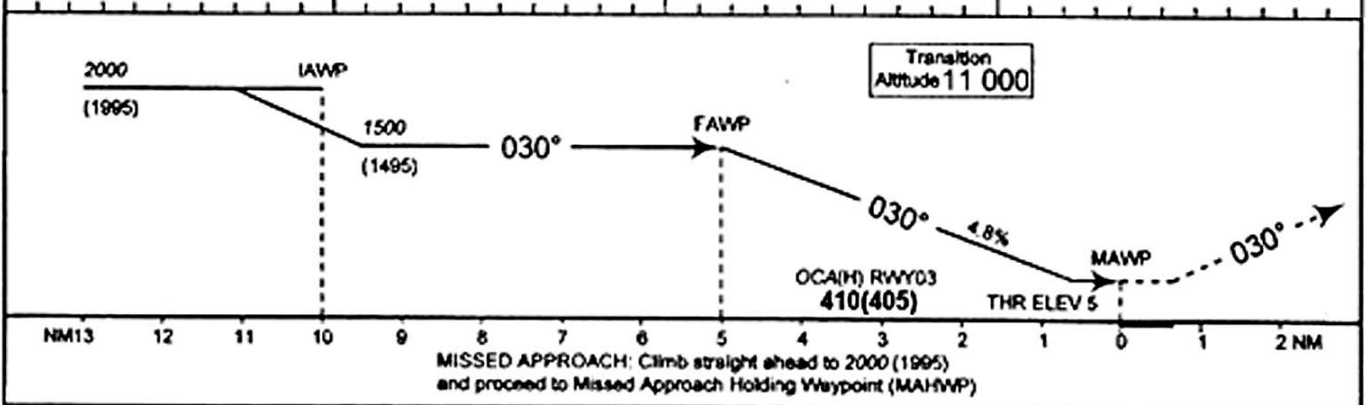
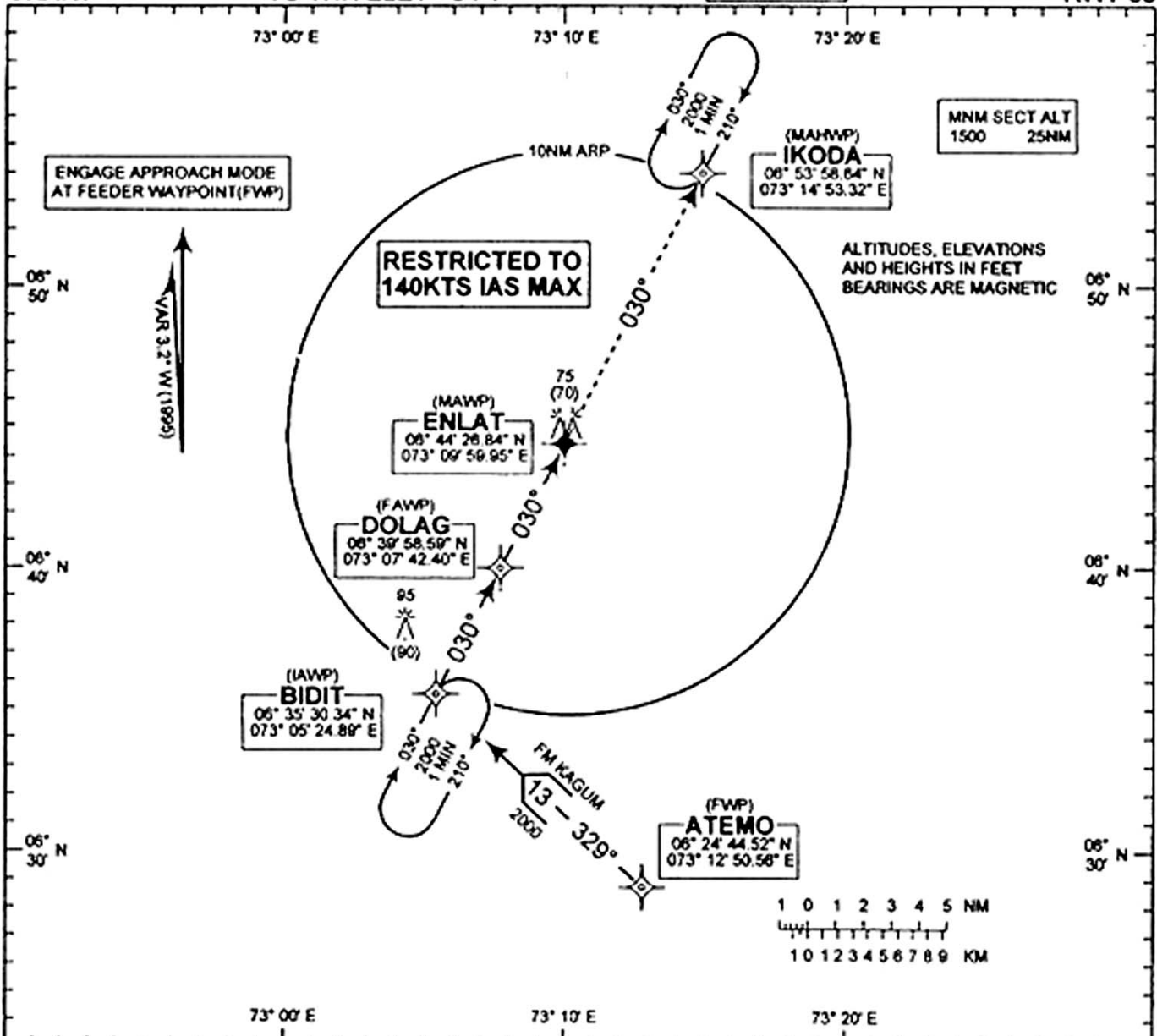
**INSTRUMENT  
APPROACH  
CHART**

**ELEV 5 FT  
HEIGHTS RELATED  
TO THR ELEV - 5 FT**

**HANIMAADHOO ISLAND / HANIMAADHOO**

**TWR 119.1**

**GPS  
RWY 03**



Aircraft Category	A		B	
	Straight - in	410(405)		
Circling	375(370)			
Track Miles	4	3	2	1
Advisory Altitude (Height)	1220(1215)	930(925)	640(635)	350(345)
Speed	knots	90	120	
Rate of descent	f / min	430	560	

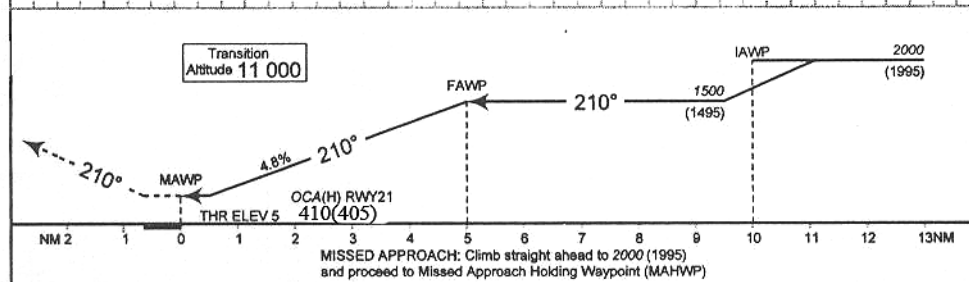
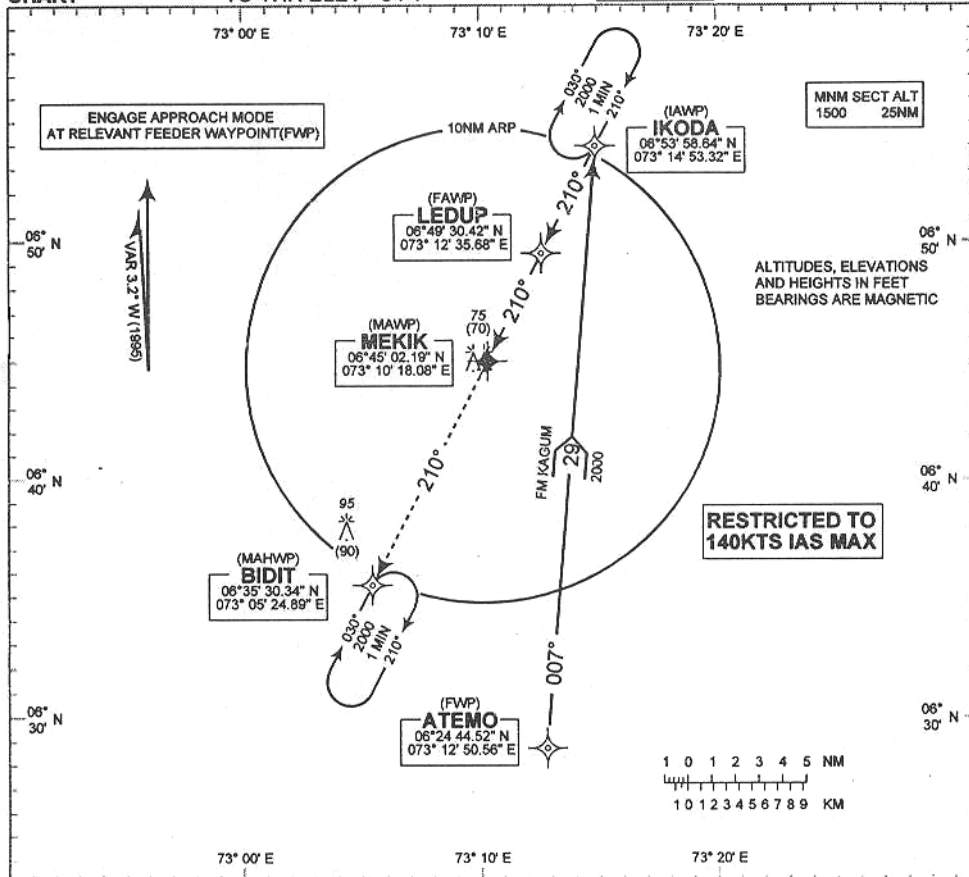
CHANGES: Transition Altitude



**INSTRUMENT APPROACH CHART**

**ELEV 5 FT  
HEIGHTS RELATED  
TO THR ELEV - 5 FT**

**HANIMAADHOO ISLAND / HANIMAADHOO**  
TWR 119.1  
GPS RWY 21

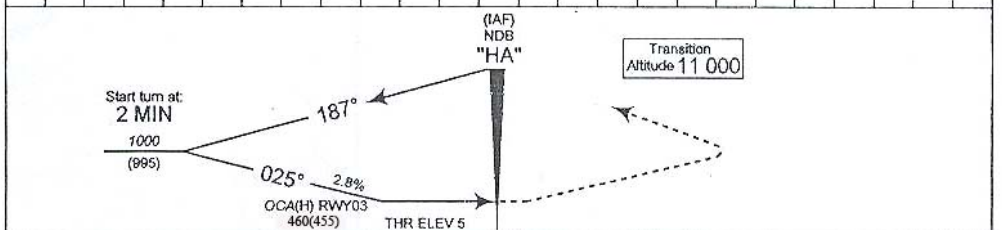
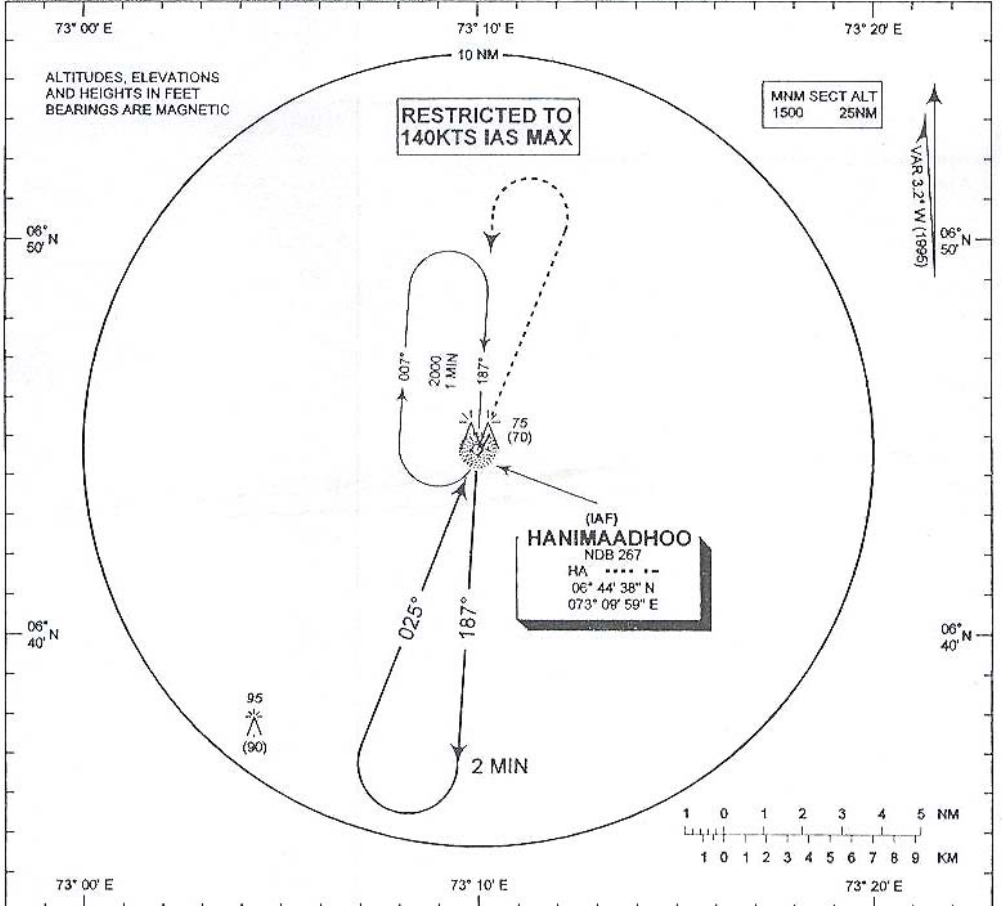


Aircraft Category	A		B	
Straight - in	410(405)			
Circling	375(370)			
Track Miles	4	3	2	1
Advisory Altitude (Height)	1220(1215)	930(925)	640(635)	350(345)
Speed	knots	90	120	
Rate of descent	ft / min	430	580	

INSTRUMENT  
APPROACH  
CHART - ICAO

ELEV 5 FT  
HEIGHTS RELATED  
TO THR ELEV - 5 FT

HANIMAADHOO ISLAND / HANIMAADHOO  
NDB  
RWY 03  
TWR 119.1

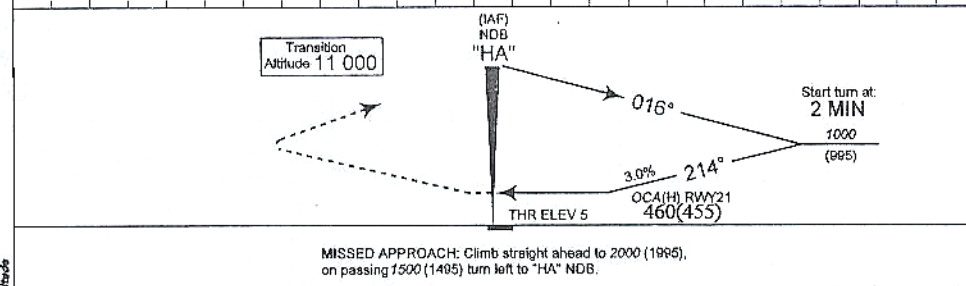
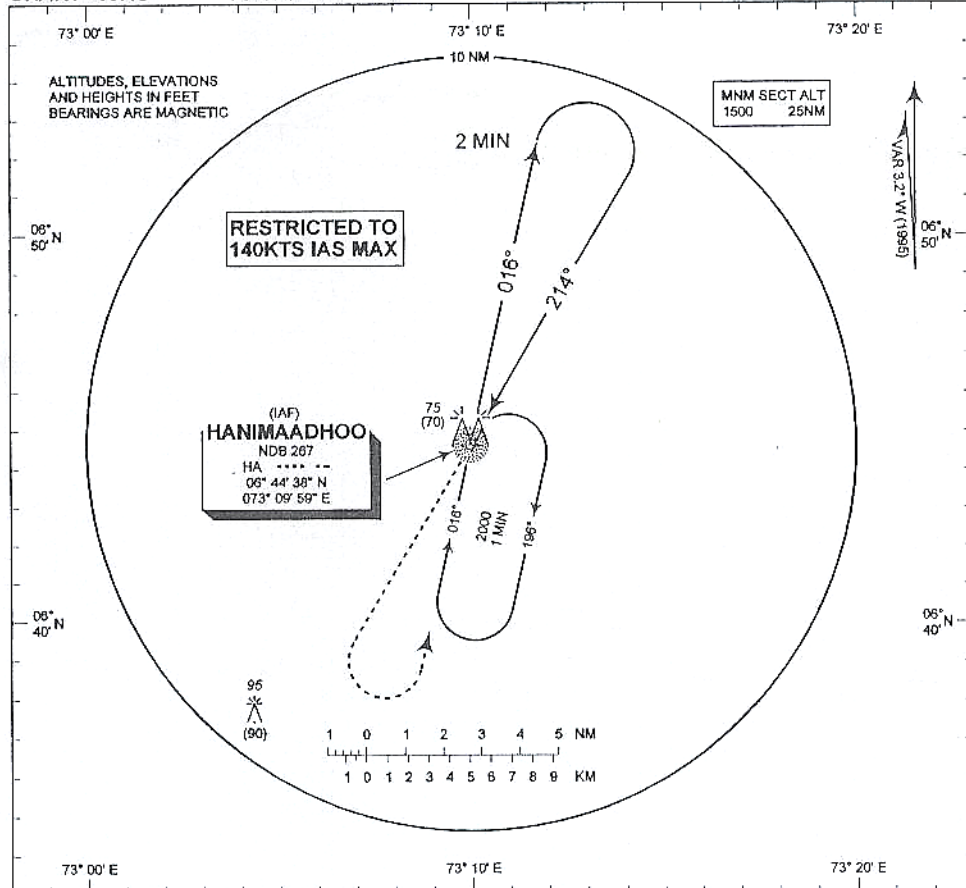


MISSED APPROACH: Climb straight ahead to 2000 (1995), on passing 1500 (1495) turn left to "HA" NDB.

CHANGES: Transition Altitude

Aircraft Category	A		B	
Straight - In	460(455)			
Circling	399(394)		497(492)	
Speed	knots	90	120	
FAP - NDE	min:sec	3:47	2:50	
Rate of descent	ft / min	260	340	

INSTRUMENT APPROACH CHART - ICAO  
ELEV 5 FT HEIGHTS RELATED TO THR ELEV - 5 FT  
HANIMAADHOO ISLAND / HANIMAADHOO NDB  
TWR 119.1 RWY 21



MISSED APPROACH: Climb straight ahead to 2000 (1865), on passing 1500 (1405) turn left to "HA" NDB.

Aircraft Category	A	B
Straight - In	460(455)	
Circling	399(394)	497(492)
Speed	knots 00	120
FAP - NDB	min:sec 3:47	2:50
Rate of descent	ft / min 280	370

CIVIL AVIATION DEPARTMENT